



BLUE VALLEY CABINETS



PRODUCT CATALOG



BLUE VALLEY CABINETS

WHERE HIGH QUALITY
CABINETS COST LESS



ANSI/KCMA A161.1

365 Spectrum Drive, Suite 110
Knightdale, NC 27545

BlueValleyCabinets.com
info@bluevalleycabinets.com

(919) 897-5666



At Blue Vally Cabinets™ we believe that no matter what your goal is, buying high-end, wholesale cabinets at an affordable price shouldn't be out of reach. Our products are of the highest quality and we offer an array of beautiful styles, colors, and finishes that will suit your project.





BLUE VALLEY CABINETS

Blue Valley Cabinets™ is new to the North Carolina area. North Carolina is known for its beautiful woodworking, and Blue Valley Cabinets is adding to the quality and affordable products that are available in the region. We take pride in both our cabinets and customer service. Because our customers are so important to us, we strive to provide the best quality product at an affordable price.

With seven available styles and colors, we're sure you or your customers will find what you're looking for. Our (5) five year limited warranty will give you and your customers peace of mind knowing that we stand behind our products.

With sister companies across the US, our manufacturer knows what it takes to produce quality cabinets at an affordable price. They take care in the production of each style and color. Having been in the cabinet manufacturing business for several years, they are able to manufacture cabinets that work with the different climates in which they are sold and installed.

Whether you want your cabinets assembled by us or you intend to do it yourself, we stand ready to provide you with the best possible service. Pickup and delivery options are available. Whatever you need, we will do our best to make your experience with us one that you will remember with satisfaction and a smile.

365 Spectrum Drive, Suite 110
Knightdale, NC 27545

BlueValleyCabinets.com
info@bluevalleycabinets.com

TABLE OF CONTENTS

KITCHEN BASE CABINETS
Pages 5 - 7

TALL CABINETS
Page 8

VANITY BASE CABINETS
Pages 14 - 15

VANITY SINK BASE COMBOS
Page 15

KITCHEN WALL CABINETS
Pages 9 - 11

GLASS DOOR WALL CABINETS
Pages 12 - 13

ACCESSORIES
Pages 16 - 19

ROLL OUT TRAYS
Page 19

CABINET FEATURES
Page 22

TRIM NOTES
Page 23 - 24

DOOR STYLES

Signature



ONYX
BLACK



MIDNIGHT
BLUE



ESPRESSO
MAPLE



MODERN
SLATE

Premium



WHITE SHAKER



GREY SHAKER

Classic



DOVE WHITE



BLUE VALLEY
CABINETS

ASK ABOUT OUR
**CUSTOM
PAINT**
SERVICE



*Only available for local delivery & pickup



HANDLES & KNOBS



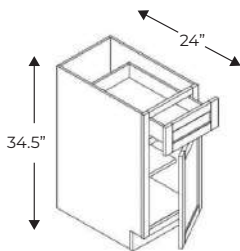
BLUE VALLEY
CABINETS

BASE CABINETS



BASE CABINET

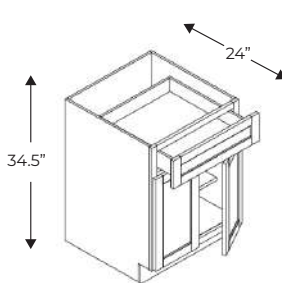
1 Door, 1 Drawer



Name	Size	Wt
B09	9w x 34.5h x 24d	45 lb
B12	12w x 34.5h x 24d	48 lb
B15	15w x 34.5h x 24d	53 lb
B18	18w x 34.5h x 24d	56 lb
B21	21w x 34.5h x 24d	60 lb

BASE CABINET

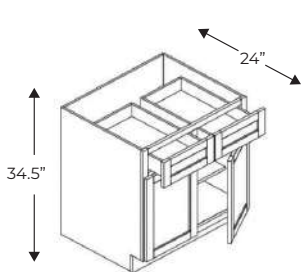
2 Doors, 1 Drawer



Name	Size	Wt
B24	24w x 34.5h x 24d	66 lb
B27	27w x 34.5h x 24d	71 lb
B30	30w x 34.5h x 24d	84 lb

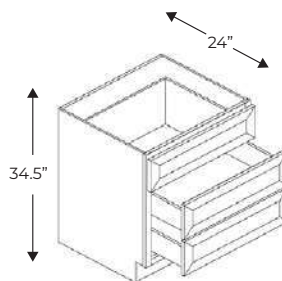
BASE CABINET

2 Doors, 2 Drawers



Name	Size	Wt
B33	33w x 34.5h x 24d	88 lb
B36	36w x 34.5h x 24d	92 lb
B42	42w x 34.5h x 24d	97 lb

3-DRAWER BASE CABINET

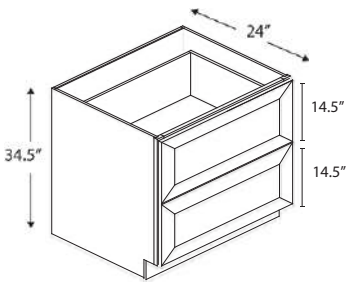


Name	Size	Wt
DB12-3	12w x 34.5h x 24d	71 lb
DB15-3	15w x 34.5h x 24d	79 lb
DB18-3	18w x 34.5h x 24d	84 lb
DB21-3	21w x 34.5h x 24d	89 lb
DB24-3	24w x 34.5h x 24d	96 lb
DB30-3	30w x 34.5h x 24d	106 lb
DB36-3	36w x 34.5h x 24d	114 lb



(919) 897-5666

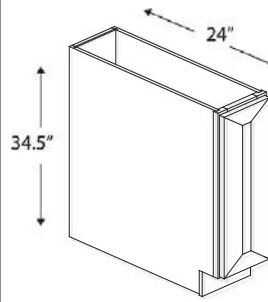
2-DRAWER BASE CABINET



Name	Size	Wt
2DB24	24w x 34.5h x 24d	86 lb
2DB30	30w x 34.5h x 24d	96 lb
2DB36	36w x 34.5h x 24d	107 lb

BASE CABINET FULL HEIGHT DOOR

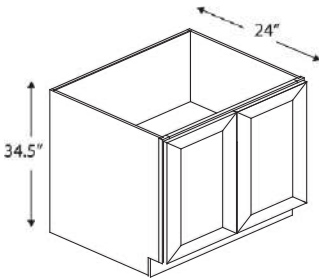
1 Door



Name	Size	Wt
B09FHD	9w x 34.5h x 24d	45 lb

BASE CABINET FULL HEIGHT DOOR

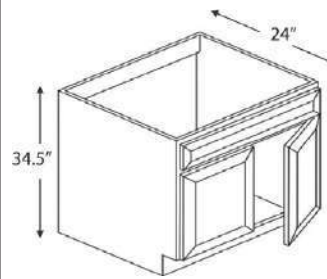
2 Doors



Name	Size	Wt
B24FHD	24w x 34.5h x 24d	66 lb

SINK BASE CABINET

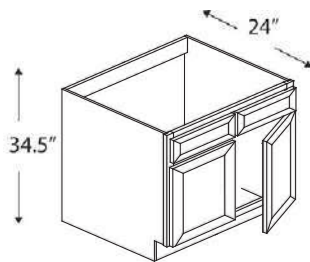
2 Doors, 1 False Drawer



Name	Size	Wt
SB24	24w x 34.5h x 24d	47 lb
SB27	27w x 34.5h x 24d	51 lb
SB30	30w x 34.5h x 24d	52 lb
SB33	33w x 34.5h x 24d	53 lb

SINK BASE CABINET

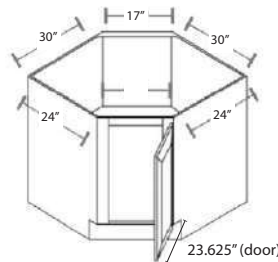
2 Doors, 2 False Drawers



Name	Size	Wt
SB36	36w x 34.5h x 24d	57 lb
SB42	42w x 34.5h x 24d	62 lb

CORNER SINK BASE CABINET

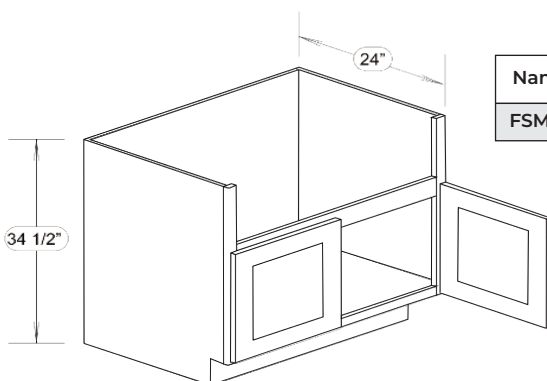
1 Door



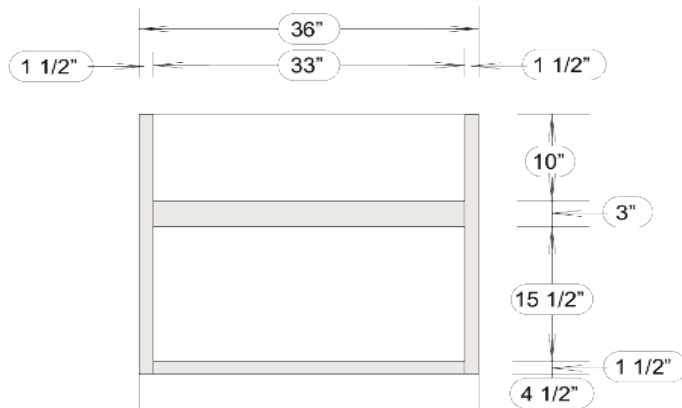
Name	Size	Wt
CSB42	42w x 34.5h x 24d	72 lb

FARM HOUSE SINK BASE CABINET

2 Doors



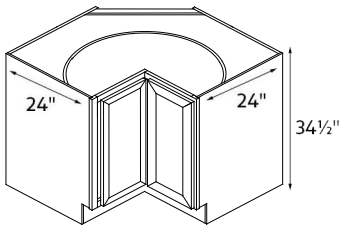
Name	Size	Wt
FSM36	36w x 34.5h x 24d	57lb





BASE LAZY SUSAN CABINET

2 Doors



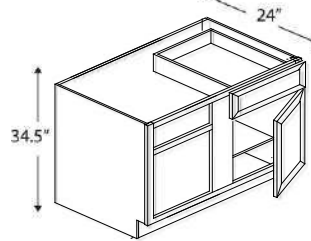
Name	Size	Wt
BLS33*	33w x 34.5h x 24d	100 lb
BLS36	36w x 34.5h x 24d	113 lb

Door width - 10 3/4"

*BLS33 - call to check availability

BLIND CORNER BASE CABINET

1 Door, 1 Drawer



Name	Size	Wt
BBC36*	36w x 34.5h x 24d	75 lb
BBC42	42w x 34.5h x 24d	81 lb

Specify left or right

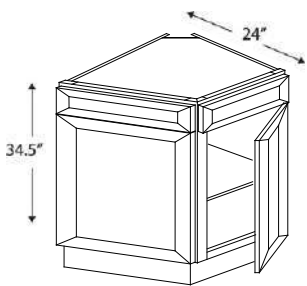
Minimum 3" pull from the wall and max with 6" pull when installed

Door width - 18"

*BBC36 - call to check availability

BASE END CORNER CABINET

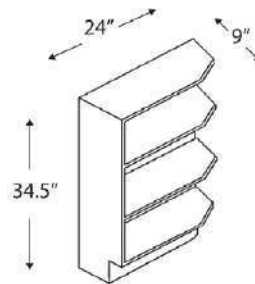
2 Doors, 2 False Fronts



Name	Size	Wt
BEC24	24w x 34.5h x 24d	51 lb

Door width - 18 5/8"

BASE END SHELF CABINET

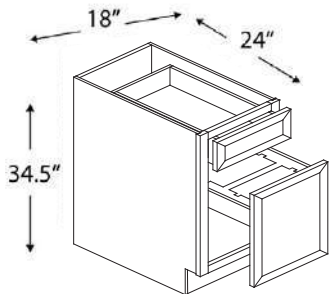


Name	Size	WT
BES09	9w x 34.5h x 24d	37 lb

Specify left or right

BASE TRASH CABINET

Please Check Our Accesories Section



Not a Cabinet		
Accessory Sold Separately		

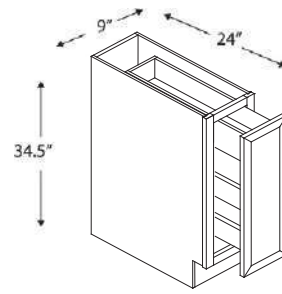
Includes two trash cans.



*B18+BWBK18-2 Makes Trash Cabinet

BASE SPICE RACK CABINET

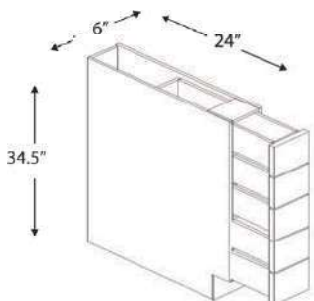
1 Door



Name	Size	Wt
SP09	9w x 34.5h x 24d	45 lb

BASE SPICE DRAWERS CABINET

5 Drawers

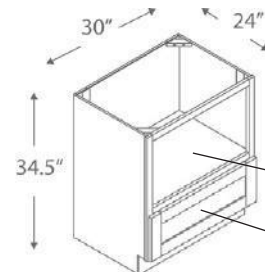


Name	Size	Wt
BWRC6	6w x 34.5h x 24d	59 lb

No soft close.

No drawer glides.

BASE MICROWAVE



Name	Size	Wt
MD30	30w x 34.5h x 24d	78 lb

27" Interior width
16 3/8" Interior height

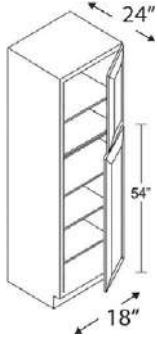
9 1/8" Drawer height



(919) 897-5666

TALL PANTRY CABINET

2 Doors

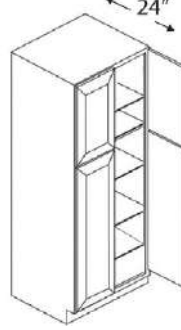


Name	Size	Wt
PC188424	18w x 84h x 24d	145 lb
PC189024	18w x 90h x 24d	152 lb
PC189624	18w x 96h x 24d	158 lb

Comes with shelves only.
Roll Out Tray (page 19) upgrade optional.

TALL PANTRY CABINET

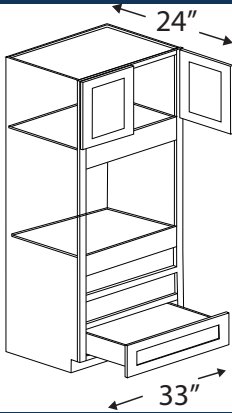
4 Doors



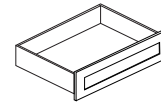
Name	Size	Wt
PC248424	24w x 84h x 24d	160 lb
PC249024	24w x 90h x 24d	171 lb
PC249624	24w x 96h x 24d	183 lb
PC308424	30w x 84h x 24d	180 lb
PC309024	30w x 90h x 24d	191 lb
PC309624	30w x 96h x 24d	206 lb

Comes with shelves only.
Roll Out Tray (page 19) upgrade optional.

TALL OVEN CABINET: 2 Doors, 1 or 3 bottom drawers



Name	Size	Wt
OC338424	33w x 84h x 24d	153 lb
OC339024	33w x 90h x 24d	165 lb
OC339624	33w x 96h x 24d	175 lb



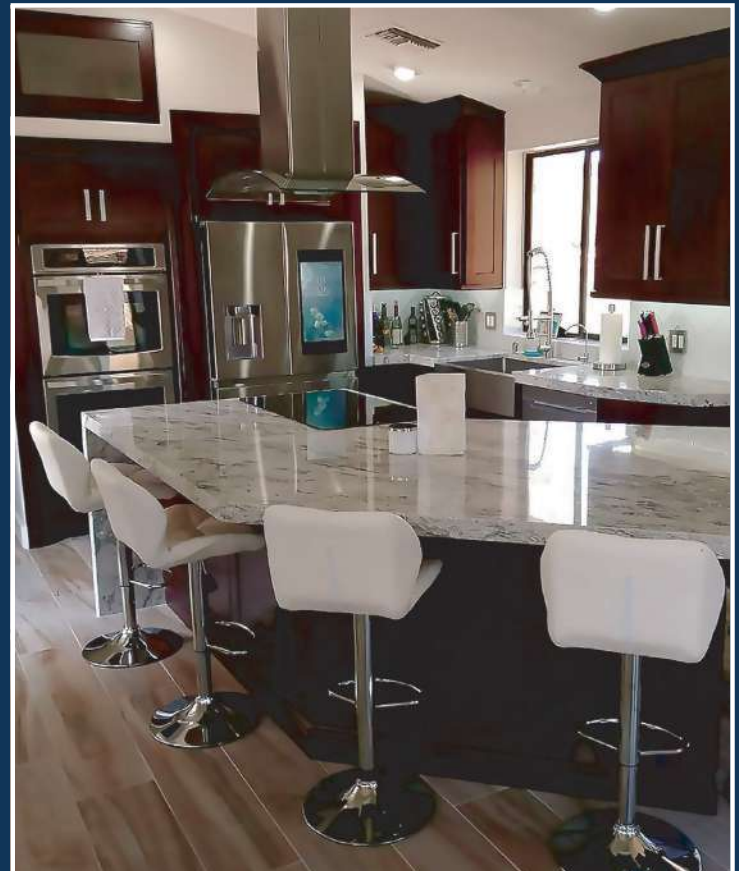
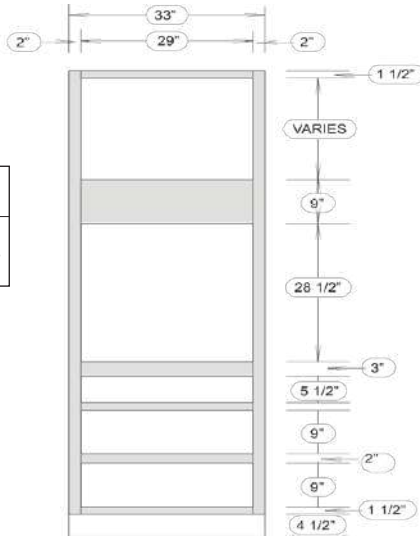
Name
OC33TOP-Drawer
OC33BOTTOM-Drawer

*Extra Top and Bottom Drawers sold separately.

NOTE: Will work for single oven or double oven. One bottom drawer included for double oven configuration (divider will need to be cut). For single oven configuration as shown, purchase two extra bottom drawers separately.

TALL OVEN CABINET:

Dimensions
2 Doors, 1 or 3 bottom drawers



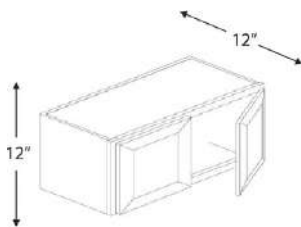
**BLUE VALLEY
CABINETS**

WALL CABINETS



WALL CABINET 12" HIGH

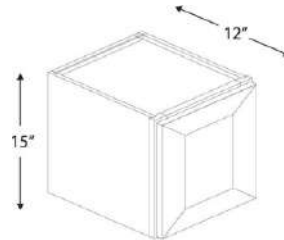
2 Doors



Name	Size	Wt
W3012	30w x 12h x 12d	23 lb
W3312	33w x 12h x 12d	25 lb
W3612	36w x 12h x 12d	26 lb

WALL CABINET 15" HIGH

1 Door

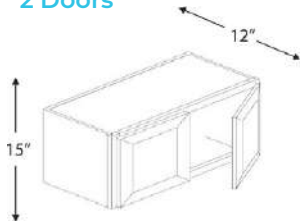


Name	Size	Wt
W1515	15w x 15h x 12d	16 lb
W1815	18w x 15h x 12d	19 lb
W2115	21w x 15h x 12d	21 lb

*Glass Doors Available, see pg.12

WALL CABINET 15" HIGH

2 Doors

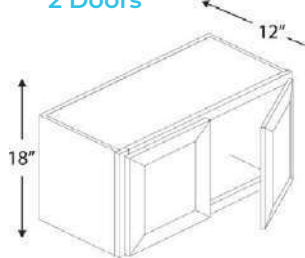


Name	Size	Wt
W2415	24w x 15h x 12d	23 lb
W2715	27w x 15h x 12d	25 lb
W3015	30w x 15h x 12d	27 lb
W3315	33w x 15h x 12d	28 lb
W3615	33w x 15h x 12d	30 lb

*Glass Doors Available, see pg.12

WALL CABINET 18" HIGH

2 Doors

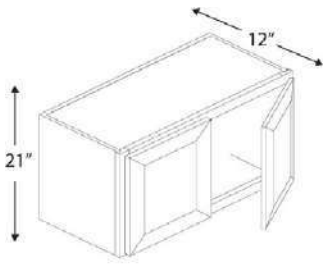


Name	Size	Wt
W3018	30w x 18h x 12d	29 lb
W3318	33w x 18h x 12d	31 lb
W3618	36w x 18h x 12d	33 lb



WALL CABINET 21" HIGH

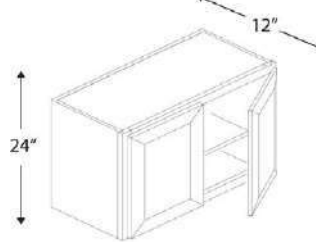
2 Doors



Name	Size	Wt
W3021	30w x 21h x 12d	32 lb
W3321	33w x 21h x 12d	34 lb
W3621	36w x 21h x 12d	39 lb

WALL CABINET 24" HIGH

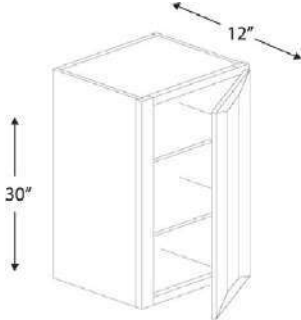
2 Doors



Name	Size	Wt
W3024	30w x 24h x 12d	39 lb
W3324	33w x 24h x 12d	43 lb
W3624	36w x 24h x 12d	44 lb

WALL CABINET 30" HIGH

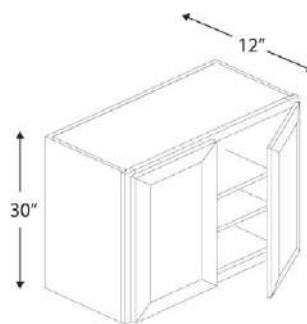
1 Door



Name	Size	Wt
W0930	09w x 30h x 12d	23 lb
W1230	12w x 30h x 12d	26 lb
W1530	15w x 30h x 12d	30 lb
W1830	18w x 30h x 12d	33 lb
W2130	21w x 30h x 12d	35 lb

WALL CABINET 30" HIGH

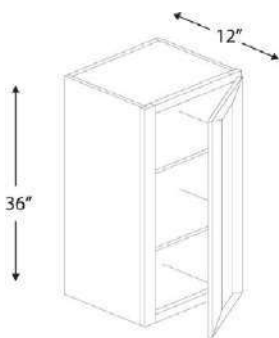
2 Doors



Name	Size	Wt
W2430	24w x 30h x 12d	38 lb
W2730	27w x 30h x 12d	45 lb
W3030	30w x 30h x 12d	49 lb
W3330	33w x 30h x 12d	53 lb
W3630	36w x 30h x 12d	55 lb
W4230	42w x 30h x 12d	63 lb

WALL CABINET 36" HIGH

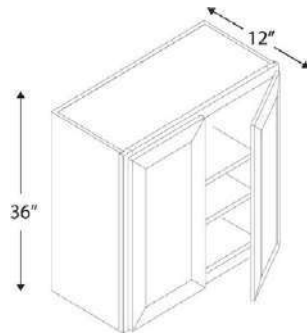
1 Door



Name	Size	Wt
W0936	09w x 36h x 12d	26 lb
W1236	12w x 36h x 12d	30 lb
W1536	15w x 36h x 12d	32 lb
W1836	18w x 36h x 12d	37 lb
W2136	21w x 36h x 12d	41 lb

WALL CABINET 36" HIGH

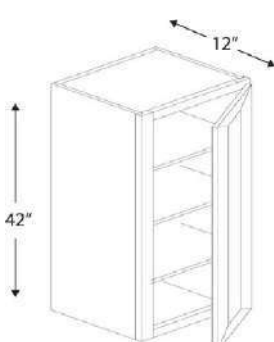
2 Doors



Name	Size	Wt
W2436	24w x 36h x 12d	46 lb
W2736	27w x 36h x 12d	48 lb
W3036	30w x 36h x 12d	54 lb
W3336	33w x 36h x 12d	58 lb
W3636	36w x 36h x 12d	62 lb
W4236	42w x 36h x 12d	69 lb

WALL CABINET 42" HIGH

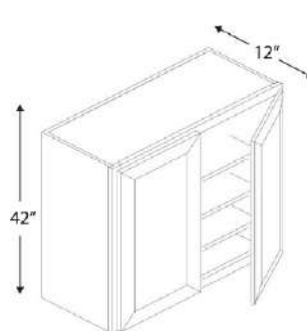
1 Door



Name	Size	Wt
W0942	09w x 42h x 12d	30 lb
W1242	12w x 42h x 12d	34 lb
W1542	15w x 42h x 12d	37 lb
W1842	18w x 42h x 12d	42 lb
W2142	21w x 42h x 12d	46 lb

WALL CABINET 42" HIGH

2 Doors

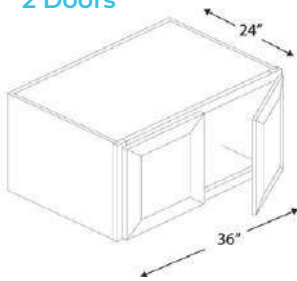


Name	Size	Wt
W2442	24w x 42h x 12d	52 lb
W2742	27w x 42h x 12d	58 lb
W3042	30w x 42h x 12d	63 lb
W3342	33w x 42h x 12d	66 lb
W3642	36w x 42h x 12d	72 lb
W4242	42w x 42h x 12d	81 lb



WALL FRIDGE CABINET

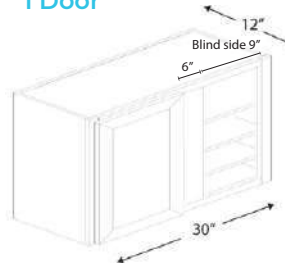
2 Doors



Name	Size	Wt
W361224	36w x 12h x 24d	33 lb
W361524	36w x 15h x 24d	38 lb
W361824	36w x 18h x 24d	39 lb
W362124	36w x 21h x 24d	50 lb
W362424	36w x 24h x 24d	67 lb

WALL BLIND CORNER CABINET

1 Door

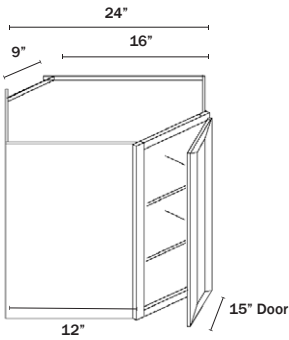


Name	Size	Wt
WBC3030	30w x 30h x 12d	44 lb
WBC3036	30w x 36h x 12d	50 lb
WBC3042	30w x 42h x 12d	57 lb

Door is 15" wide
Specify left or right

WALL DIAGONAL CORNER 24" Wide

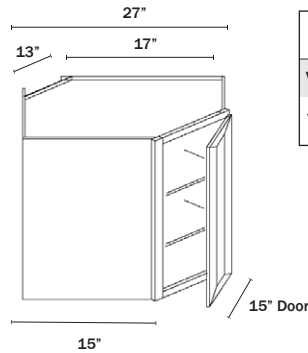
1 Door



Name	Size	Wt
WDC2415	24w x 15h x 12d	31 lb
WDC2430	24w x 30h x 12d	58 lb
WDC2436	24w x 36h x 12d	64 lb
WDC2442	24w x 42h x 12d	75 lb

WALL DIAGONAL CORNER 27" Wide

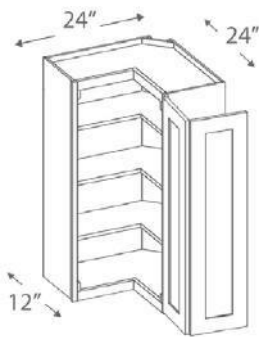
1 Door



Name	Size	Wt
WDC273615	27w x 36h x 15d	77 lb
WDC274215	27w x 42h x 15d	90 lb

WALL EASY REACH CABINET

2 Doors



Name	Size	Wt
WLS2430	24w x 30h x 12d	60 lb
WLS2436	24w x 36h x 12d	67 lb
WLS2442	24w x 42h x 12d	79 lb

Include shelf only

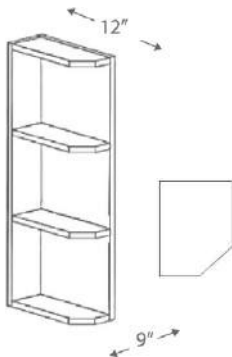
WALL END CABINET

2 Doors



Name	Size	Wt
WEC1230	12w x 30h x 12d	26 lb
WEC1236	12w x 36h x 12d	30 lb
WEC1242	12w x 42h x 12d	42 lb

WALL END SHELVES

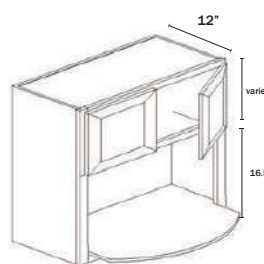


Name	Size	Wt
WES0930	09w x 30h x 12d	19 lb
WES0936	09w x 36h x 12d	20 lb
WES0942	09w x 42h x 12d	24 lb

Specify left or right

WALL MICROWAVE CABINET

2 Doors

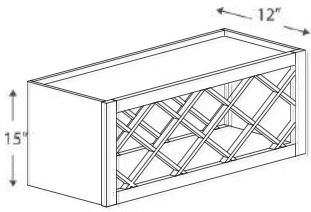


Name	Size	Wt
WMC2730	27w x 30h x 12d	39 lb
WMC2736	27w x 36h x 12d	45 lb
WMC2742	27w x 42h x 12d	49 lb

Interior opening width 24"
Interior opening height 16 1/2"



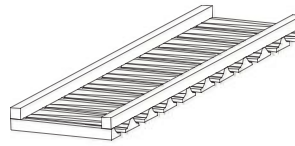
WALL WINE RACK



Name	Size	Wt
WRC3015	30w x 15h x 12d	25 lb
WRC3615	36w x 15h x 12d	28 lb

Can be used vertical.

WALL GLASS RACK

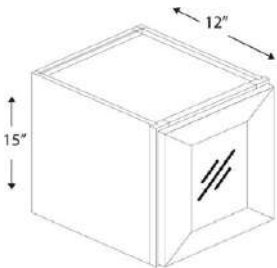


Name	Size	Wt
30GR	30w x 1.5h x 12d	7 lb
36GR	36w x 1.5h x 12d	7 lb

Attaches under cabinets.

WALL GLASS CABINET DOORS 15" HIGH

1 Door

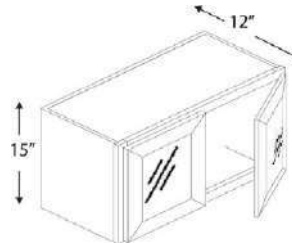


Name	Size	Wt
W1515GD	15w x 15h x 12d	15 lb
W1815GD	18w x 15h x 12d	18 lb
W2115GD	21w x 15h x 12d	20 lb

Frosted glass.
Finished interior is an optional upgrade.

WALL GLASS CABINET DOORS 15" HIGH

2 Doors

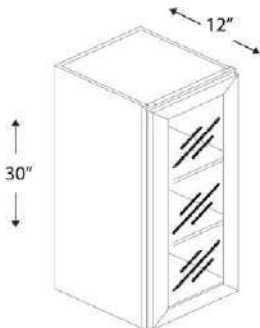


Name	Size	Wt
W2415GD	24w x 15h x 12d	23 lb
W2715GD	27w x 15h x 12d	25 lb
W3015GD	30w x 15h x 12d	28 lb
W3315GD	33w x 15h x 12d	28 lb
W3615GD	36w x 15h x 12d	31 lb

Frosted glass.
Finished interior is an optional upgrade.

WALL GLASS CABINET DOORS 30" HIGH

1 Door

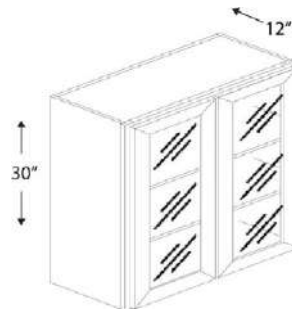


Name	Size	Wt
W1530GD	15w x 30h x 12d	30 lb
W1830GD	18w x 30h x 12d	34 lb

Frosted glass.
Finished interior is an optional upgrade.

WALL GLASS CABINET DOORS 30" HIGH

2 Doors

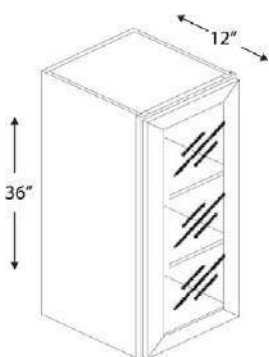


Name	Size	Wt
W2430GD	24w x 30h x 12d	40lb
W3030GD	30w x 30h x 12d	50 lb
W3630GD	36w x 30h x 12d	60 lb

Frosted glass.
Finished interior is an optional upgrade.

WALL GLASS CABINET DOORS 36" HIGH

1 Door

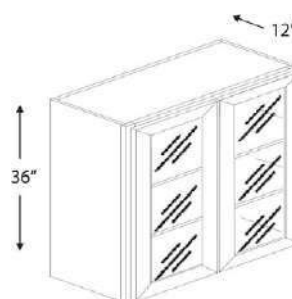


Name	Size	Wt
W1536GD	15w x 36h x 12d	14 lb
W1836GD	18w x 36h x 12d	14 lb

Frosted glass.
Finished interior is an optional upgrade.

WALL GLASS CABINET DOORS 36" HIGH

2 Doors

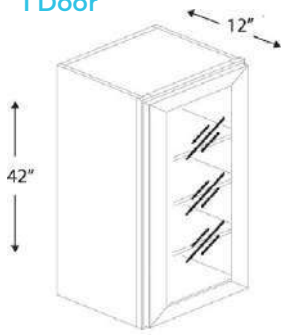


Name	Size	Wt
W2436GD	24w x 36h x 12d	50 lb
W3036GD	30w x 36h x 12d	58 lb
W3636GD	36w x 36h x 12d	66 lb

Frosted glass.
Finished interior is an optional upgrade.

WALL GLASS CABINET DOORS 42" HIGH

1 Door

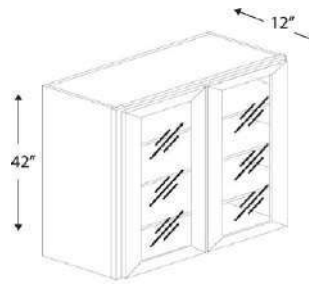


Name	Size	Wt
W1542GD	15w x 42h x 12d	44 lb
W1842GD	18w x 42h x 12d	61 lb

Frosted glass.
Finished interior is an upgrade option.

WALL GLASS CABINET DOORS 42" HIGH

2 Doors

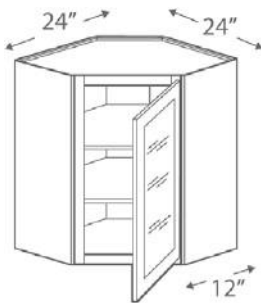


Name	Size	Wt
W2442GD	24w x 42h x 12d	66 lb
W3042GD	30w x 42h x 12d	72 lb
W3642GD	36w x 42h x 12d	79 lb

Frosted glass.
Finished interior is an upgrade option.

WALL DIAGONAL GLASS CORNER DOORS 24" Wide

1 Door



Name	Size	Wt
WDC2415GD	24w x 15h x 12d	31 lb
WDC2430GD	24w x 30h x 12d	64 lb
WDC2436GD	24w x 36h x 12d	70 lb
WDC2442GD	24w x 42h x 12d	80 lb

Frosted glass.
Finished interior is an upgrade option.
Door width 15"

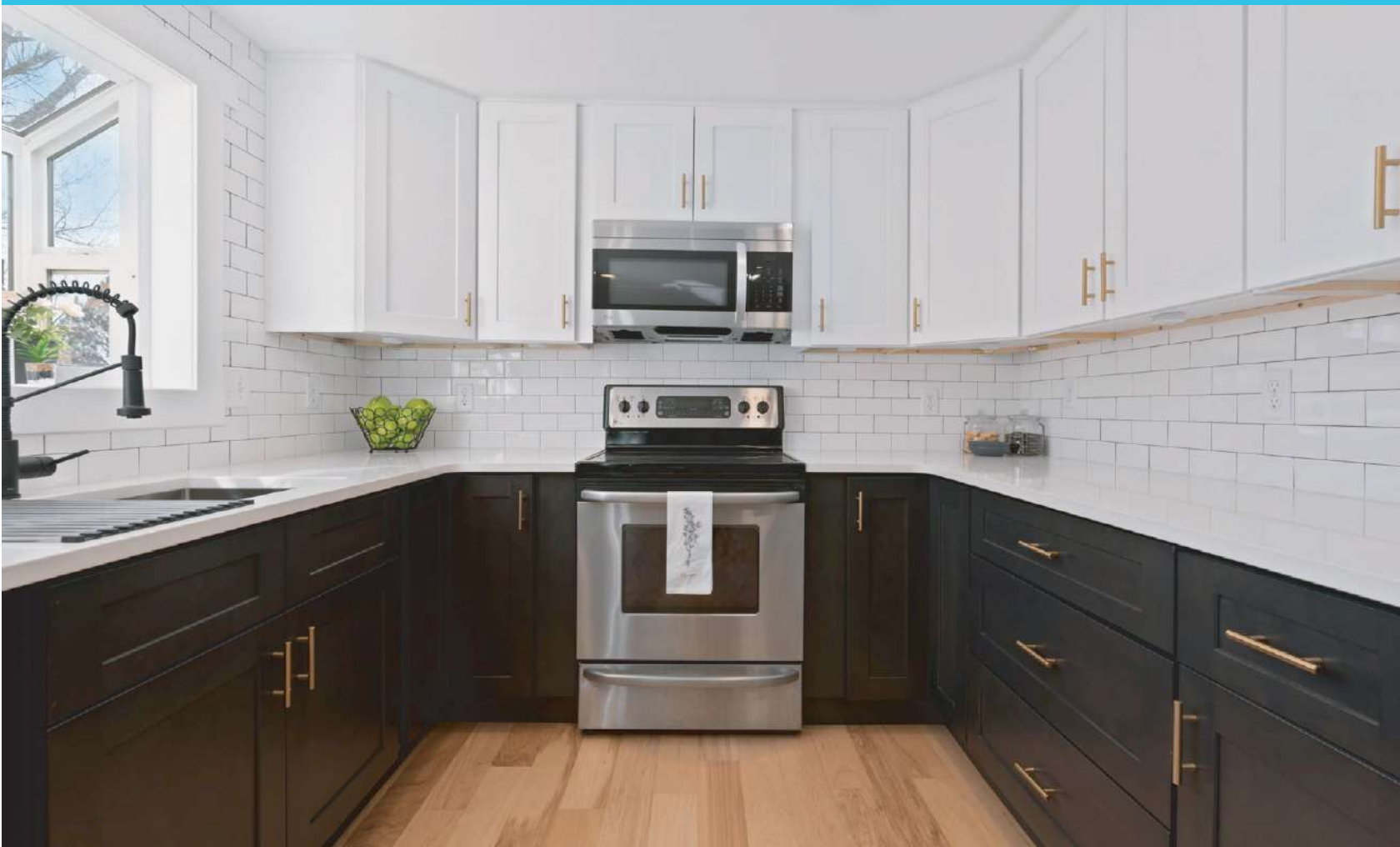
WALL DIAGONAL GLASS CORNER DOORS 27" Wide

1 Door



Name	Size	Wt
WDC273615GD	27w x 36h x 15d	82 lb
WDC274215GD	27w x 42h x 15d	100 lb

Frosted glass.
Finished interior is an upgrade option.
Door width 15"

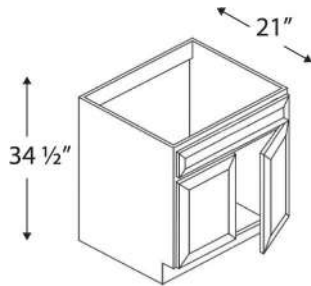


VANITY CABINETS



VANITY SINK BASE CABINET

2 Doors, 1 False Drawer

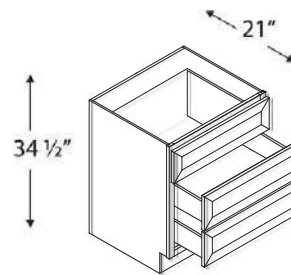


Name	Size	Wt
VSB2421	24w x 34.5h x 21d	42 lb
VSB2721	27w x 34.5h x 21d	45 lb
VSB3021	30w x 34.5h x 21d	48 lb
VSB3321*	33w x 34.5h x 21d	51 lb
VSB3621	36w x 34.5h x 21d	54 lb

* Call for availability

VANITY DRAWER BASE CABINET

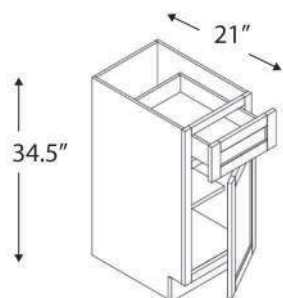
3 Drawers



Name	Size	Wt
VDB12	12w x 34.5h x 21d	69 lb
VDB15	15w x 34.5h x 21d	74 lb
VDB18	18w x 34.5h x 21d	81 lb
VDB21	21w x 34.5h x 21d	86 lb
VDB24	24w x 34.5h x 21d	94 lb

VANITY SINK BASE CABINET

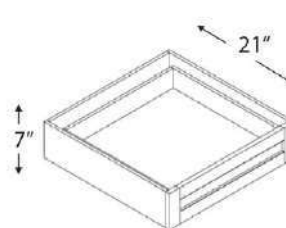
1 Door, 1 Drawer



Name	Size	Wt
VB12	12w x 34.5h x 21d	47 lb
VB15	15w x 34.5h x 21d	50 lb
VB18	18w x 34.5h x 21d	56 lb

VANITY KNEE DRAWER

1 Drawer



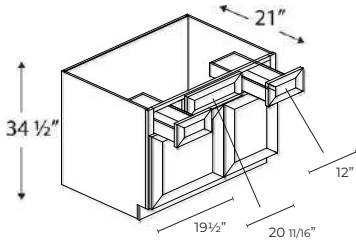
Name	Size	Wt
KD24	24w x 7h x 21d	29 lb
KD30	30w x 7h x 21d	34 lb
KD36	36w x 7h x 21d	39 lb

Commonly used as a desk drawer or an additional stacked drawer.



VANITY SINK BASE COMBO 42"

1 Drawer Left, 1 Drawer Right, Sink Centered

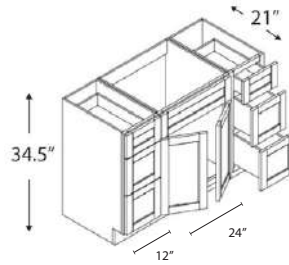


Name	Size	Wt
VSD4221	42w x 34.5h x 21d	88 lb

Two deep 12" wide drawers.
No center style.
Full back.

VANITY SINK BASE COMBO 48"/60"

3 Drawers Left, 3 Drawers Right, Sink Centered

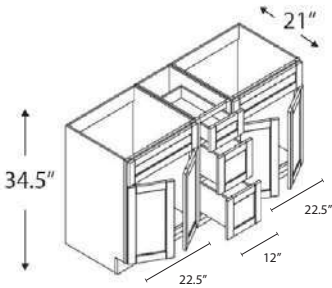


Name	Size	Wt
VSD4821D	48w x 34.5h x 21d 12" wide drawers	145 lb
VSD6021D	60w x 34.5h x 21d 15" wide drawers	164 lb

Six deep 12" wide drawers.
No center style.
Sink centered.

VANITY SINK BASE COMBO 60"

3 Drawers Middle, Double Sink

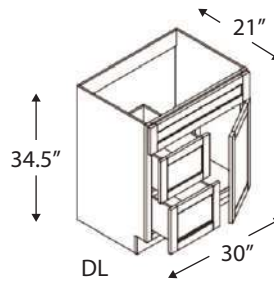


Name	Size	Wt
VSD6021DD	60w x 34.5h x 21d	120 lb

Three deep 12" wide drawers.
No center styles.

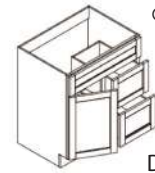
VANITY SINK BASE COMBO CABINET 30"

1 Door, 2 Drawers



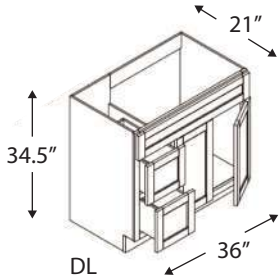
Name	Size	Wt
VSD3021DL	30w x 34.5h x 21d	79 lb
VSD3021DR	30w x 34.5h x 21d	79 lb

Two deep 12" wide drawers.
Centered sink, one door.
Full back.



VANITY SINK BASE COMBO CABINET 36"

2 Doors, 2 Drawers



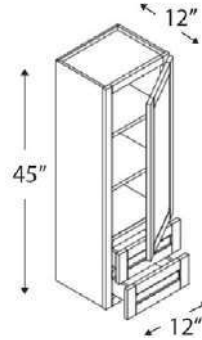
Name	Size	Wt
VSD3621DL	36w x 34.5h x 21d	87 lb
VSD3621DR	36w x 34.5h x 21d	87 lb

Two deep 12" wide drawers.
Centered sink, 2 doors.
No center style.
Full back.



VANITY COUNTERTOP LINEN CABINET

1 Door, 2 Drawers

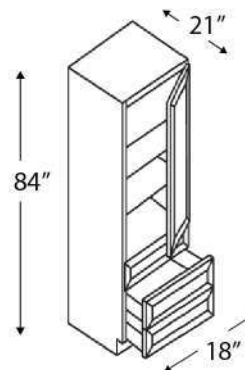


Name	Size	Wt
DVI245	12w x 45h x 12d	45 lb

Designed to be put on top of counter

VANITY LINEN CABINET

1 Door, 3 Drawers



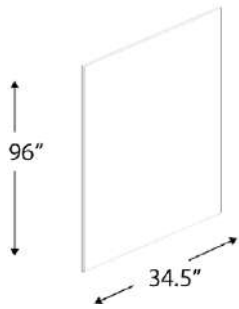
Name	Size	Wt
SVA188421	18w x 84h x 21d	149 lb



ACCESSORIES



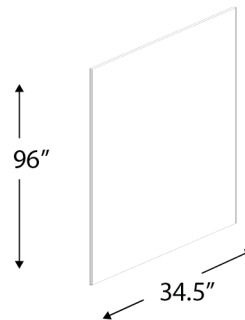
1/4" CABINET SKINS



Name	Size	Wt
FPNL34.5x.25-1	34.5w x 96h x 1/4d	26 lb

Finished: matching color on one side

1/2" CABINET PANEL

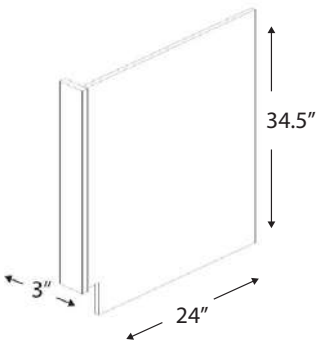


Name	Size	Wt
FPNL34.5x.5-1	34.5w x 96h x 1/2d	36 lb
FPNL34.5x.5	34.5w x 96h x 1/2d	36 lb

Finished-1: finished skin panel, matching color one side

Finished-2: finished skin panel, matching color two sides

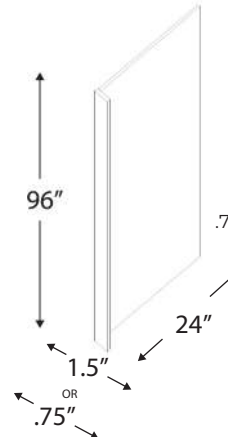
DISHWASHER RETURN PANEL



Name	Size	Wt
DWR	24w x 34.5h x 3d	11 lb

Dishwasher panel with 3" return filler

REFRIGERATOR RETURN PANEL

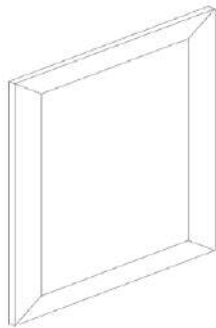


Name	Size	Wt
REP9624x1.5	1.5w x 96h x 24d	31 lb
FPNL24X .75	.75w x 96h x 24d	31 lb

Refrigerator panel with 1.5" return filler
.75" refrigerator panel is all edge finished with no return filler

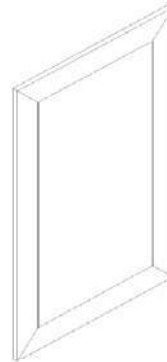


BASE FALSE DOOR



Name	Size
BFD21	20½w x 29¼h x ¾d
BFD24	23½w x 29¼h x ¾d

WALL FALSE DOOR



Name	Size
FD1215	11½w x 14¾h x ¾d
FD1230	11½w x 29½h x ¾d
FD1236	11½w x 35½h x ¾d
FD1242	11½w x 41½h x ¾d

CABINET FILLERS

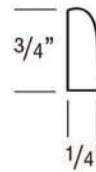


Name	Size
WF330	3w x 30h x ¾d
WF336	3w x 36h x ¾d
WF342	3w x 42h x ¾d
WF630	6w x 30h x ¾d
WF636	6w x 36h x ¾d
WF642	6w x 42h x ¾d
TF1.5x96	1.5w x 96h x ¾d
TF3x96	3w x 96h x ¾d
TF6x96	6w x 96h x ¾d

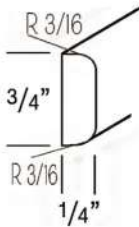
SCRIBE MOLDING



Name	Size
SM8	96" long

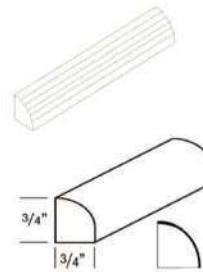


BATTEN MOLDING

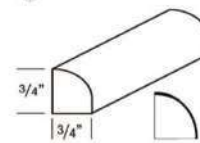


Name	Size
SDM8	96" long

QUARTER ROUND MOLDING



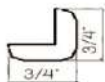
Name	Size
QRM8	96" long



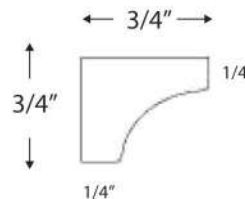
OUTSIDE CORNER MOLDING



Name	Size
OCM8	96" long



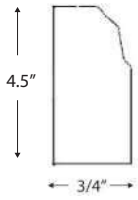
COVE MOLDING



Name	Size
CM8	96" long



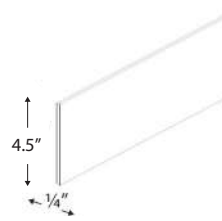
BASE MOLDING



Name	Size
BM8	96" long

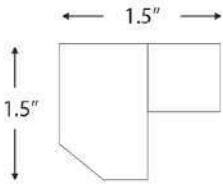


TOE KICK



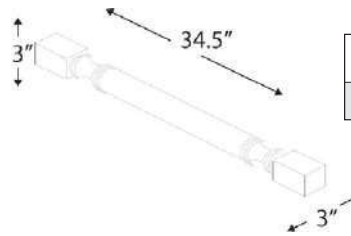
Name	Size
TK8	96" long

LIGHT RAIL MOLDING



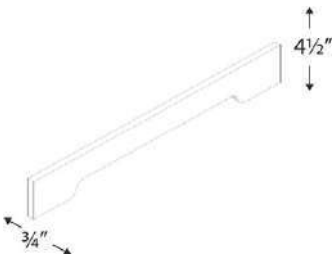
Name	Size
LM8	96" long

TURN POST



Name	Size
POST	3w x 34.5h x 3d

VALANCE



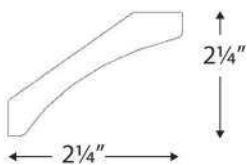
Name	Size
VALANCE30	4.5w x 30h x 3/4d
VALANCE36	4.5w x 36h x 3/4d

MIRRORS



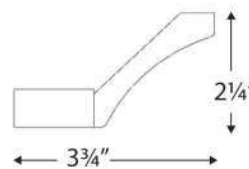
Name	Size
MIRROR2430	24w x 30h
MIRROR3030	30w x 30h

SHAKER CROWN MOLDING: 2 1/4" TALL



Name	Size
SCM2 1/4	96" long

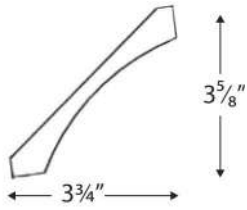
SHAKER CROWN MOLDING: 2 1/4" TALL (with heel)



Name	Size
SCM2 1/4 -heel	96" long

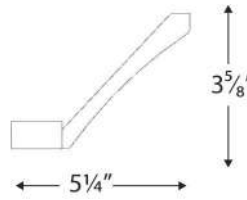


SHAKER CROWN MOLDING: 3 5/8" TALL



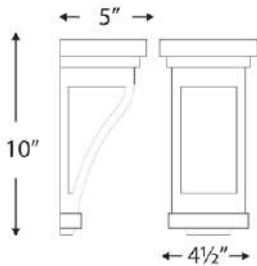
Name	Size
SCM3 5/8	96" long

SHAKER CROWN MOLDING: 3 5/8" TALL (with heel)



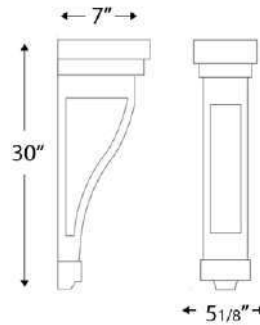
Name	Size
SCM3 5/8 - heel	96" long

SHAKER SMALL CORBEL



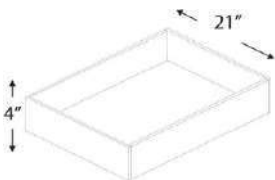
Name	Size
SSC410	4.5w x 10h x 5d

SHAKER LARGE CORBEL



Name	Size
SLC530	5 1/8w x 30h x 7d

ROLL OUT TRAYS



Name	Size
ROT15	15w x 4h x 21d
ROT18	18w x 4h x 21d
ROT21	21w x 4h x 21d
ROT24	24w x 4h x 21d
ROT27	27w x 4h x 21d
ROT30	30w x 4h x 21d
ROT33	33w x 4h x 21d
ROT36	36w x 4h x 21d

MISCELLANEOUS ACCESSORIES

Name	Size
BWBK18-2	14 3/4w x 10h x 21d

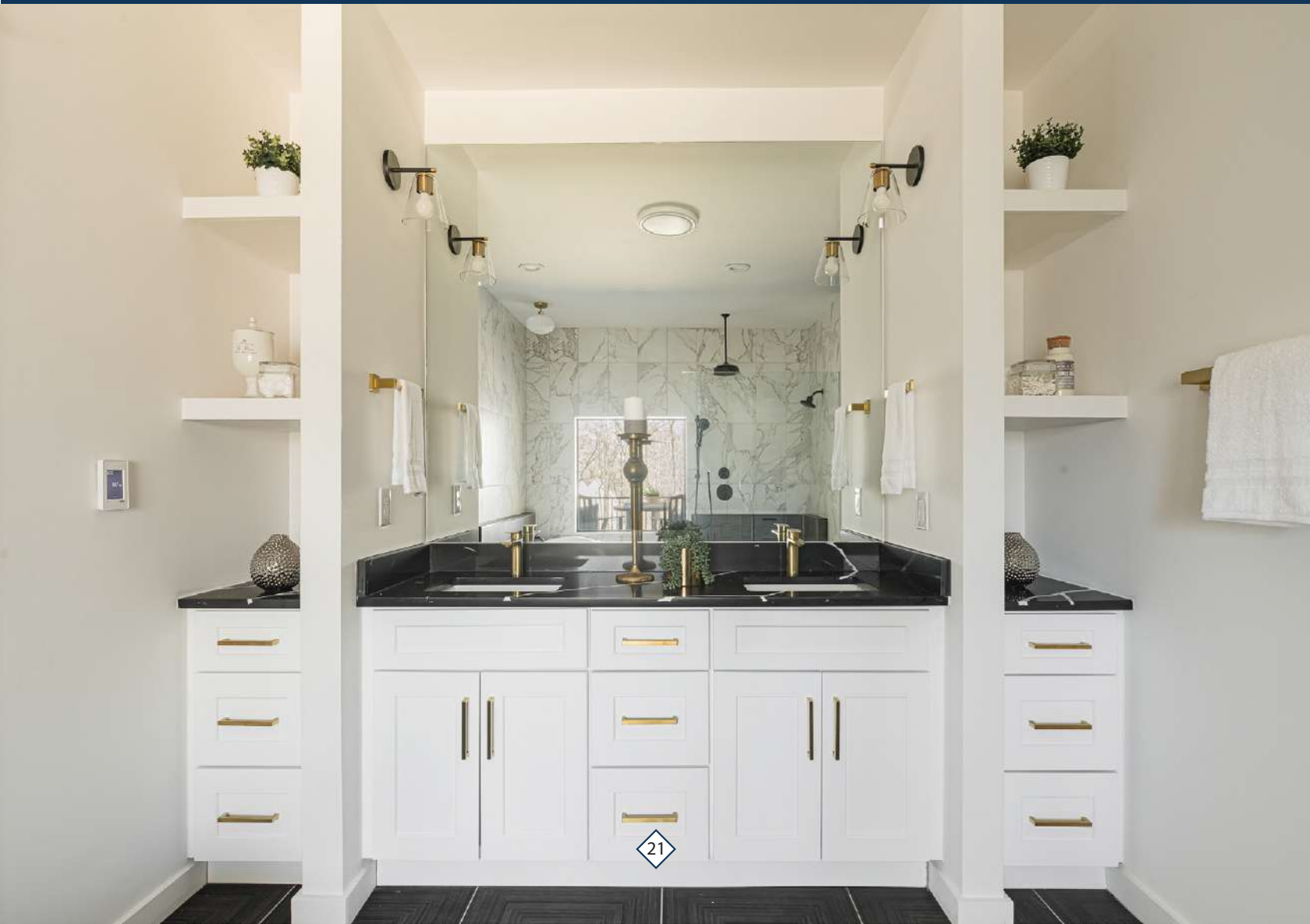
Name
TOUCH-UP KIT
SPRAY CAN
PAINT (QUART)



*Touch up kits, Spray can, and Paint Available in all colors.





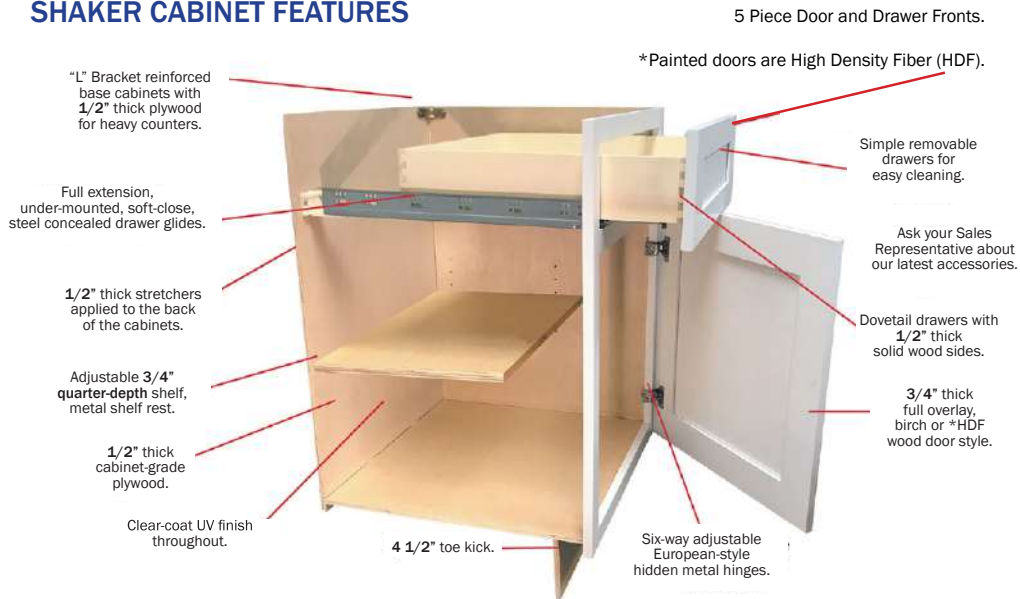






We provide affordable factory direct all wood cabinets of the highest standard and quality. Custom cabinet quality with certain features common in every unit:

SHAKER CABINET FEATURES



- ✓ Every Drawer has quality Dove Tail Construction
- ✓ Simple Removable Drawers for easy cleaning
- ✓ No Particle Board anywhere!
- ✓ Soft Closing Drawers and Doors
- ✓ L-Bracketed Reinforced Cabinets for Heavy Granite, Cement or other Stone Tops



BLUE VALLEY CABINETS

365 Spectrum Drive, Suite 110
Knightdale, NC 27545

BlueValleyCabinets.com
info@bluevalleycabinets.com

(919) 897-5666



TRIM NOTES



Crown Molding

Crown Molding is used to finish the tops of tall and wall cabinets. Some cabinets are Full Overlay - this means the doors overlap the front face frame of the cabinet box, leaving only a small amount visible. Since this visible reveal will vary depending on the specific cabinet line you choose, it may require the Crown Molding to be installed on top of the cabinet frame instead of to the face, secured with blocking from behind. Crown is available in various styles and sizes to accommodate different designs and ceiling heights.



Light Rail Molding

Light Rail Molding is used to finish the bottom of wall cabinets. It can function as a trim to conceal under-cabinet lighting fixtures and provide a barrier from the light glare, or as a decorative enhancement. Light Rail Moldings are available in a variety of styles and sizes to accommodate different styles. When selecting a Light Rail Molding, be mindful of the molding height to ensure that the open space left after installation will accommodate any counter top appliances.



Base Molding

Base Molding is generally used to provide a decorative trim at the floor level of base cabinets by installing it with the profiled edge facing up. It completes the lower sections of panel skins used on islands and peninsulas to give them a more furniture-like feel. Installing the molding along the lower section of cabinet back panels and sides, and ending at the toe recess will create one continuous look.



Corner Molding

Corner molding is used to cover an unfinished edge or gap where two panels or pieces of material meet at a 90 degree angle. Outside Corner Molding is used to cap the raw edge of material visible on an exterior corner. Inside Corner Molding is used to cover any gaps where two pieces of material meet on an interior corner. They should be used in conjunction with any design that will require finished paneling on the back of a cabinet such as an island or peninsula.



Filler

Filler is more commonly used to "fill" any gap or leftover space in a run of cabinetry by field-cutting them to the desired size. They can be used vertically to provide additional space between a cabinet and a wall in order to keep the edge of doors from binding into the wall, or to keep fully extended drawers from impacting close obstacles. They can be used horizontally as crown, light rail, or valance, or to add additional and dimension as a riser molding. Fillers are available in a variety of lengths to minimize waste.



Toe Kick

The purpose of a toe kick space is to create a recess for your feet, which allows you to stand closer to the countertop or workspace more comfortably. The toe kick stretcher attached to the cabinet is usually made of unfinished material. After installation, a finished Toe Kick Molding is applied to cover an entire run of unfinished toe space. Toe Kick Molding is a 96" long strip of finished covering that is field-cut and positioned in the recess to provide a continuous completed look to the cabinetry. Our cabinets come with toekick.



**BLUE VALLEY
CABINETS**

TRIM NOTES

✓ Skin Panels

Skin Panels are 1/4" plywood with a matching finish on one side. They are available in a variety of sizes in order to provide finish options for different needs. These Skin Panels are available in specific sizes and are designed to fit on the side of a cabinet behind the face frame edge with minimal field cuts required. Oversized Skin Panels, such as those used to finish the back of an island or to cover a stack of cabinetry, are larger and must be field-cut to the desired dimensions.

✓ Scribe Molding

Scribe Molding is a thin piece of finished trim used to cover any areas that may have uneven gaps or raw edges visible once installation is complete. It is slightly flexible, allowing it to follow slight curvatures against walls, floors, or ceilings. It is typically used any place the straight edges of cabinetry visibly come into contact with a surface that is bowed or uneven. It is available in 96" lengths and must be field-cut to cover any visible gaps or seams against walls, floors, and ceilings up to 1/2" wide. It is also used to cap the cut, unfinished edge of a Toe Kick Molding or any other raw edge of material up to 3/4" wide.

✓ Starter Strip/Riser Molding

A Starter or Riser is used as a mounting frame for Crown Molding in order to increase the overall height of a Crown Molding assembly, or allow it to rise flush to the ceiling. A Starter or Riser is mounted to the cabinet top in order to simulate an extension of the cabinet, allowing the Crown Molding to be installed higher. Using a Starter or Riser in conjunction with a Crown Molding also provides the ability to better disguise an uneven ceiling, as one end of the Crown Molding may be mounted higher or lower than the other end along the face of the Riser.



BLUE VALLEY
CABINETS



BLUE VALLEY CABINETS

Warranty

As a direct importer, we are confident in the cabinets we sell. We stand behind our products and offer a limited five-year warranty. If you have a warranty claim please contact Blue Valley Cabinets and fill out the Warranty Sheet with a detailed description and pictures of the defects or damage you are experiencing with our products. Email your completed Warranty Sheet to warranty@bluevalleycabinets.com and upon receiving your email we will let you know our decision to repair or replace the defective product.

DO NOT PROCEED TO THE NEXT STEP WITHOUT THE PRIOR WRITTEN CONSENT OF BVC.
BVC will be responsible for all shipping and handling fees if a valid claim is approved. Please review our terms for more details on your product's warranty.

THIS LIMITED WARRANTY IS SUBJECT TO ALL LIMITATIONS, EXCLUSIONS, DISCLAIMERS, APPROVAL, AND PROCEDURES.

For a period of five years, BVC warrants to the original purchaser that cabinetry, door hinges, and drawer glides will be free from defects in material and workmanship under normal use and service. This warranty is not transferable and only applicable to products used for single-family owner-occupied residential purposes. This warranty does not cover normal wear and tear, damage or defects caused by accidents, misused or abused items, mishandled or improperly installed items, improperly stored items, customized or modified items, or items that are subject to extreme temperature or moisture level.

Natural woods may vary in color and grain pattern. Just as no two trees are alike, no two pieces of wood are alike. The variation in color and grain pattern in wood adds to its natural beauty and is not considered an imperfection.

Environmental factors, including but not limited to artificial/natural light, moisture, cleaners, smoke, etc. May cause the darkening or mellowing of a cabinet over time. This is a natural process and can be expected. This warranty does not cover the natural aging or darkening / mellowing of wood color, the inherent growth characteristics of, or variation in wood.

Wood is wood, and expansion-contraction still happens year after year as it compensates and adjusts to ever-changing atmospheric humidity and temperature conditions. Therefore, warping of less than 1/4" is not considered a defect. The purchaser agrees to let doors that are warped 1/4" or more to hang for two seasons before replacement is requested. Typically, a door will return to its normal flat position once it is acclimated to temperature and humidity conditions. Prior to requesting a replacement for a warped door, please be sure the door has been installed properly and hinges are adjusted correctly.

Stain variations: since no two trees are the same, wood is a unique material with natural variations in grain, texture, and color. These variations may also cause considerable differences between old samples and new cabinets. Please Note: Newly produced cabinets will never be the same color as aged samples or cabinets. Color changes may occur in the finished wood products. As a result of exposure to light and other elements that are part of the aging process. These material variations and changes are not covered by this warranty.

Some of the cabinet lines feature a glazed finish which accentuates the door and drawer front profiles. This glaze is hand applied over a stain or paint and may, due to the nature of the application, consist of random drip runs, etc. As glazing is a hand applied process there will be variations in color and appearance from door to door and cabinet to cabinet. This is not considered a defect and is considered normal with hand-applied finishes. Cabinet lines with painted surfaces may show fractures in the paint at joints. This is normal and is not considered a defect. At our discretion, we may elect to repair or replace with a functionally equivalent product covered by this warranty. Some replacement parts are subject to stock availability and may differ from the original parts received. Return of defective product may be required for a replacement to be issued. Repair parts or replacement parts are at the expense of Blue Valley Cabinets. This warranty does not include or cover the cost of installation, removal, subsequent damage, or transportation of the defective product. This is regardless of whether work was performed by a contractor, service company, or yourself.

To obtain service under this warranty, please contact the business from whom you purchased this product. A copy of the original purchaser's dated receipt must be submitted with all claims to preserve the rights under this warranty. This warranty is non-transferable. Blue Valley Cabinets Inc reserves the right to inspect the claimed defective cabinets. No returns, replacements, or repairs may be made without prior written consent. This warranty is the sole warranty of Blue Valley Cabinets Inc. No dealer, distributor or agent possesses any authority whatsoever to modify or enlarge the above warranty in any way.

NOTES



BLUE VALLEY CABINETS

WHERE HIGH QUALITY
CABINETS COST LESS

365 Spectrum Drive, Suite 110
Knightdale, NC 27545

BlueValleyCabinets.com
info@bluevalleycabinets.com

(919) 897-5666

